



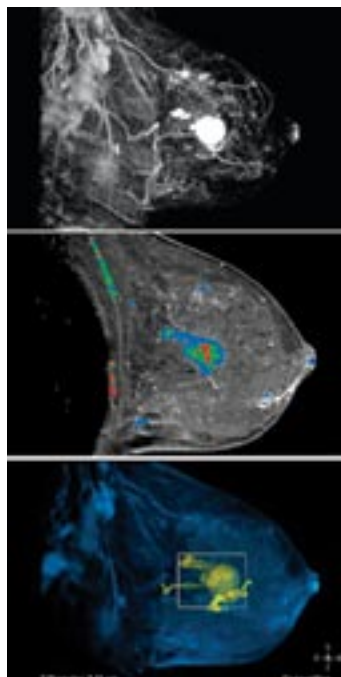
CHANGING THE FACE OF BREAST IMAGING

Breast MRI is an exciting new technology that is now available at Arcadia Radiology Medical Group as part of our already comprehensive array of services.

Breast MRI tumor evaluation using intravenous contrast material has emerged as the most sensitive technique to detect invasive ductal cancer, the most common form of breast cancer. The sensitivity of breast MRI is reported to be the highest of any breast imaging test, approaching 100% for invasive breast cancer, limited by specificity. It promises to totally revolutionize the diagnosis and treatment of breast cancer.

Our 1.5 Tesla MRI is equipped with GE's exclusive VIBRANT technology to maximize the spatial resolution (high detail) and temporal resolution (ability to see changes in a short period of time), that allows simultaneous imaging of both breasts in the sagittal and axial planes. Detailed images of both breasts will be acquired every 60 seconds after contrast material (gadolinium)

has been injected. The serial images are then analyzed by an advanced software system called DynaCAD by Invivo that uses computed assisted diagnostic (CAD) technology to display the breast images using color mapping. With DynaCAD the radiologist has the ability to interactively study the anatomic and physiologic changes aiding dramatically in interpreting the massive number of images and blood flow information obtained in every breast MRI tumor study. Color mapping with CAD helps distinguish benign from malignant changes in breast blood flow. These changes are detectable on the serial images after the contrast material passes through the breast. It is the development of abnormal blood vessels in breast cancer (tumor angiogenesis) that results in the high sensitivity of breast MRI locating breast cancers, which often are not detected by mammography or physical examination.



Indications For Breast MRI

- Screening women with strong family history of breast cancer or genetic predisposition (BRCA1 and BRCA2)
- Assessment of size and extent of known breast cancer before surgery
- Search for additional cancers in the same breast and other breast
- Evaluation of indeterminate mammographic and/or ultrasound findings
- Recurrent cancer vs. scarring from surgery
- Assessment of effect of chemotherapy
- Silicone implants

The ARMG Radiologists are qualified experts in all aspects of breast imaging and can therefore provide the most comprehensive imaging evaluation. Studies are analyzed in light of the patient's history, prior mammograms, and ultrasound findings. The ultimate goal of the final breast MRI report is to offer a specific recommendation that will lead to a conclusive answer for the patient.

ARMG offers state-of-the-art equipment and highly experienced and trained professionals. Ultimately, our patients benefit from the most accurate recommendations and most specific diagnosis available today in breast imaging.

InSight

Monthly Newsletter
June 2007

Visit us on the web
www.arcadiaradiology.com

We welcome your
Feedback and
suggestions about this
newsletter and our
services. Please call
626-445-4850

Our Radiologists:

Leon E. Lis, MD
Miguel M. Palos, MD
Tien T. Peng, MD
William G. Roberts, MD
Michael D. Smith, MD
Jose S. Tandoc, MD
A. Franklin Turner, MD
Wilson S. Wong, MD

Central Scheduling:
626-445-4850

Billing Department:
626-445-4854

Medical Records:
626-821-8123

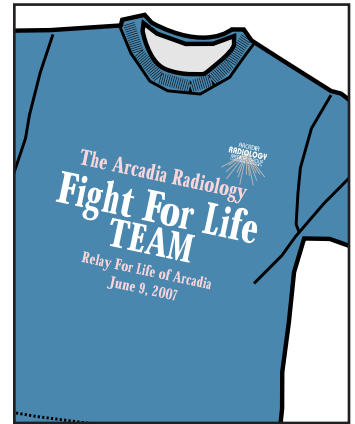
**Arcadia Radiology
Medical Group**
612 W. Duarte Rd.
Suite 101
Arcadia, CA 91007

PULLING AN ALL-NIGHTER

Dedicated to fighting all types of cancer, Arcadia Radiology Medical Group's "Fight For Life" Team will once again show their spirit and offer their support during the Relay For Life of Arcadia on June 9.

Relay For Life® is a fun-filled overnight event designed to bring together those who have been touched by cancer in our community. The event serves to celebrate survivorship and raise money to help the American Cancer Society in its mission to save lives, help those who have been touched by cancer, and empower individuals to fight back. Teams will gather at Santa Anita Park and take turns walking or running laps. Each team tries to keep at least one team member on the track at all times.

This is ARMG's 4th year of participating in the Relay For Life. If you'd like to support our team or join our Fight For Life Team on June 9, call Margie at: 626-821-8177.



Top 10 Tips: FOR A FUN FAMILY VACATION

1. Confirm your reservations
2. Remember to put a hold on your newspaper and mail delivery
3. Organize the credit cards you plan to bring and leave others at home.
4. If you're visiting a foreign country, plan ahead & take a small amount of that country's currency.
5. Pack as light as possible
6. Check the weather of your destination
7. Confirm your flight departure time
8. Pack your camera and video equipment 24 hours in advance with all batteries charged
9. If you're flying, pack a small bag of essentials just in case your bags get delayed.
10. If you're driving, make sure your car has a tune-up and you have a map on hand.

NEW BREAST MRI INDICATIONS

The American Cancer Society has released new guidelines advising Breast MRIs for some women with a high-risk of breast cancer.

Certain women with an especially high risk of developing breast cancer should get magnetic resonance imaging (MRI) scans along with their yearly mammogram, according to a new American Cancer Society guideline. The two tests together give doctors a better chance of finding breast cancer early in these women, when it is easier to treat and the chance of survival is greatest.

The new guidelines are published in the latest issue of the ACS journal *CA: A Cancer Journal for Clinicians*. It recommends MRI screening in addition to mammograms for women who meet certain conditions.

You can read the full text of this article on our website www.arcadiaradiology.com. For more information about these new guidelines and about breast cancer visit the American Cancer Society at www.cancer.org.

**Inside
THE NEXT ISSUE:**
**Non-invasively
evaluating the
arteries of the
body with MRA**

